



Pentecost 9

July 30, 2023



Christ Lutheran Church
9212 Taylorsville Rd.
Louisville, KY 40299
www.christlutheranlouisville.com

WE WELCOME OUR VISITORS who worship with us today. We are glad you are here and we invite you to worship with us again and often. If you have no church home, we invite you to consider Christ Lutheran Church. Please sign the attendance card or the Yellow Visitor card in each pew and place it in the offering plate.

INVITATION TO HOLY COMMUNION

Jesus Christ is the host at the table of Holy Communion and invites all to come. Here the real presence of Jesus meets us in the form of bread and wine. In this sacrament he offers himself to us for the forgiveness of sin and the promise of eternal life. You can come forward to the Communion Rail to receive the Holy Communion or if you choose, the Holy Communion kits are available in the narthex, for in-person worship.)

CALL TO WORSHIP

The prelude is a time to prepare for worship. When the prelude begins, please enter the sanctuary prayerfully and reverently. Please silence your cell phones and take this time to quiet your minds and voices.

WiFi: CLCChurch **PW:** peace9212

Facebook:

Christ Lutheran Church@CLCLouisville

YouTube:

<https://rb.gy/lmzlco>

Rev. Dr. Bimen Limbong, **Pastor**
Pr. George Mercer, **Pastoral Assistant**
Ann Colbert Wade, **Director of Music**

Pentecost

Prelude: *God of Grace and God of Glory*

Lovelace

Welcome

Stand

Brief Order of Confession and Forgiveness

P In the name of the Father, and of the + Son, and of the Holy Spirit.

C Amen.

P God of all mercy and consolation, come to the aid of your people, turning us from our sin to live for you alone. Give us the power of your Holy Spirit that, attentive to your Word, we may confess our sins, receive your forgiveness, and grow into the fullness of your Son, Jesus Christ our Lord.

C Amen.

P Let us confess our failures, fears, and weaknesses to God, asking that we be restored to wholeness and peace.

Stand/Kneel Silence for reflection and self-examination

P Most merciful God,

C We confess that we are in bondage to sin and cannot free ourselves. We have sinned against you in thought, word, and deed, by what we have done and by what we have left undone. We have not loved you with our whole heart; we have not loved our neighbors as ourselves. For the sake of your Son, Jesus Christ, have mercy on us. Forgive us, renew us, and lead us, so that we may delight in your will and walk in your ways, to the glory of your holy name. Amen

P Our God is merciful, slow to anger, and rich in steadfast love. I declare to you the entire forgiveness of all your sin in the name of Jesus, who has restored us to God our maker. By the power of the Holy Spirit, be renewed to wholeness of life.

C Amen.

Peace

P The peace of the Lord be with you all.

C And also with you.

The Gathering

Entrance Hymn: *Open Your Ears, O Faithful People*

#519

Greeting

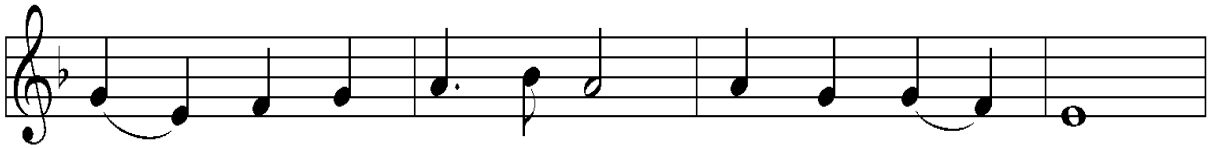
P The grace of our Lord Jesus Christ, the love of God, and the communion of the Holy Spirit be with you all.

C And also with you.

Kyrie



A Ky - ri - e e - le - i - son: **C** Lord, have mer - cy.
Lord, have mer - cy:



A Chri - ste e - le - i - son: **C** Christ, have mer - cy.
Christ, have mer - cy:



A Ky - ri - e e - le - i - son: **C** Lord, have mer - cy.
Lord, have mer - cy:

Hymn of Praise



☐ Glo-ry to God, glo-ry to God, glo-ry to God in the high - est;



glo-ry to God, glo-ry to God, and peace to God's peo-ple on earth.



☐ Lord God, heav-en - ly king, al-might- y God and Fa-ther, we



wor-ship you, we give you thanks, we praise you for your glo - ry.



☐ Glo-ry to God, glo-ry to God, glo-ry to God in the high - est;



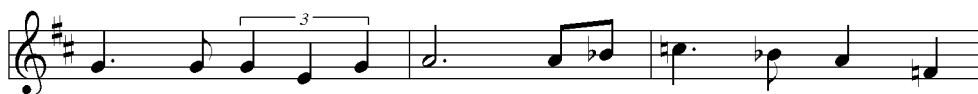
glo-ry to God, glo-ry to God, and peace to God's peo-ple on earth.



☐ Lord Je - sus Christ, on - ly Son of the Fa - ther,



Lord God, Lamb of God, you take a - way the sin of the



world: have mer - cy on us; you are seat - ed at the



right hand of the Fa - ther: re-ceive our prayer.



☐ Glo-ry to God, glo - ry to God, glo - ry to God in the high - est;



glo - ry to God, glo - ry to God, and peace to God's peo - ple on earth.



I
II For you a - lone are the Ho - ly One, you a - lone are the Lord,



you a - lone are the Most High, Je - sus Christ, with the Ho - ly



Spir - it, in the glo - ry of God the Fa - ther, A - men.



☐ Glo-ry to God, glo - ry to God, glo - ry to God in the high - est;



glo - ry to God, glo - ry to God, and peace to God's peo - ple on earth,



and peace to God's peo - ple on earth.

Prayer of the day: *(See on screen/Celebrate insert)*

P The Lord be with you.

C And also with you.

P (prayer)

C Amen.

Sit

Children's Sermon

Word

Readings and Psalm: *(See on screen/Celebrate insert)*

End 1st and 2nd reading with:

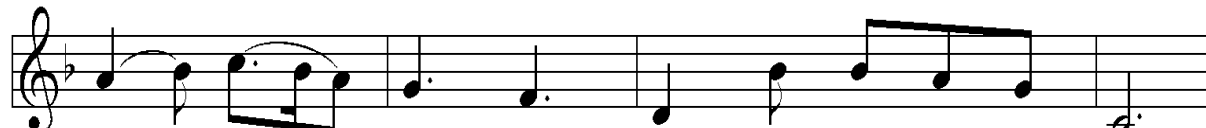
A The word of the Lord.

The congregation responds with:

C Thanks be to God.

Stand


Gospel Acclamation



Al - le - lu - ia. Lord, to whom shall we go?



Al - le - lu - ia. You have the words of e - ter - nal life.



Al - le - lu - ia, al - le - lu - ia.

Gospel: *(See on screen/Celebrate insert)*

P The Holy Gospel according to:

C **Glory to you O Lord**

P The Gospel of the Lord.

C **Praise to you O Christ**

Sit

Sermon

Stand

Hymn of the Day: *Be Thou My Vision*

#793

The Apostles' Creed

P God has made us his people through our Baptism into Christ, living together in trust and hope we confess our faith...

**I believe in God, the Father almighty,
creator of heaven and earth.**

**I believe in Jesus Christ, God's only Son, our Lord,
who was conceived by the Holy Spirit,
born of the virgin Mary,
suffered under Pontius Pilate,
was crucified, died, and was buried;
he descended to the dead. ***

**On the third day he rose again;
he ascended into heaven,
he is seated at the right hand of the Father,
and he will come to judge the living and the dead.**

**I believe in the Holy Spirit,
the holy catholic church, **
the communion of saints,
the forgiveness of sins,
the resurrection of the body,
and the life everlasting. Amen.**

*Or, He descended into hell

** catholic church means 'universal church or Christian church throughout the world'.

Intercessory Prayers *(See on screen/Celebrate insert)*

Sit

Offering:

For on-line worshipers please mail to the office at 9212 Taylorsville Road, 40299 or contact the office for instructions for direct deposit. You may also use our on-line app at [tithely.ly](https://tithely.com) or scan QR code on the right)



SCAN ME

Stand

Offertory Prayer

P Let us pray.

C God of mercy and grace, the eyes of all wait upon you, and you open your hand in blessing. Fill us with good things at your table, that we may come to the help of all in need, through Jesus Christ, our redeemer and Lord. Amen.



"Pray without ceasing" -1 Thessalonians 5:17

The Great Thanksgiving

P The Lord be with you.

C And also with you.

P Lift up your hearts.

C We lift them to the Lord.

P Let us give thanks to the Lord our God.

C It is right to give God thanks and praise.


Preface

P It is indeed right...

...we praise your name and join their unending hymn:



☞ Ho - ly, ho - ly, ho - ly Lord, God of pow - er and



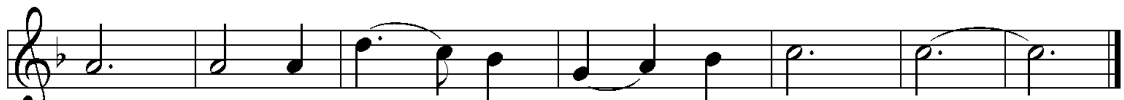
might, heav - en and earth are full of your glo - ry.



Ho - san - na in the high - est. Bless - ed is he who



comes in the name of the Lord. Ho - san - na in the



high - est. Ho - san - na in the high - est.

Eucharistic Prayer

The Lord's Prayer

P Lord, remember us in your kingdom and teach us to pray.

C Our Father, who art in heaven,
hallowed be thy name,
thy kingdom come,
thy will be done,
on earth as it is in heaven.

Give us this day our daily bread;
and forgive us our trespasses,
as we forgive those
who trespass against us;
and lead us not into temptation,
but deliver us from evil.

For thine is the kingdom,
and the power, and the glory,
forever and ever. Amen.

Sit



Communion



C Lamb of God, you take a - way the sin of the world; have mer-cy on



us. Lamb of God, you take a - way the sin of the world; have



mer-cy on us. Lamb of God, you take a - way the



sin of the world; grant us peace, grant us peace.

Stand

Blessing

P The body and blood of our Lord Jesus Christ strengthen you in faith and keep you in his grace.

C Amen.

Post-Communion Prayer

A Let us pray.

C We give you thanks, almighty God, that you have refreshed us through the healing power of this gift of life; we pray that in your mercy you would strengthen us through this gift, in faith toward you and fervent love toward one another; for the sake of Jesus Christ our Lord. Amen.

Benediction

P The Lord bless you and keep you. The Lord's face shine on you with grace and mercy. The Lord look upon you with favor and + give you peace.

C Amen.

Sending Hymn: *God of Grace and God of Glory*

#705

DISMISSAL

A Walking with Christ, go in peace to love and serve our church and neighbors.

C Thanks be to God!

Postlude: *Sortie*

C. Franck



CHRIST EVANGELICAL LUTHERAN CHURCH
THE CHURCH IN LIFE & WORK

July 30, 2023

July 30	8:30am	-Worship In Person w/ Communion
	9:45am	-Sunday School-Adult/Youth
	11:00am	-Worship In Person and @Home Service w/ Communion
	12:15pm	-Social Hour (Solarium area)
July 31	12:00pm	-Prayer Meeting / Bible Study
Aug 1	9:30am	-Tuesday Friends
	7:00pm	-Property Committee Meeting
Aug 2	9:30am	-Wednesday Friends

✠**LIVE STREAM** - The 11:00am service is live streamed on Sundays at 11:00pm. You can join us on our Facebook page or YouTube. We need volunteers to live stream our 11:00am service. If you are interested, there is a sign up sheet in the Narthex.

✠**JAM DONATIONS** - Laundry items: Detergent, fabric softener, dryer sheets, & stain remover

✠**ATTENDANCE CARDS** - Please make sure you fill out the attendance cards completely each week to help us keep our parish records up to date. Please be sure to put the worship time you attend and each family member's name.

✠**PROPERTY**- The property committee asks if you have a concern, please fill out a blue form located by the office and place it in the church property mailbox for action in lieu of asking a committee member on Sunday morning.

✠**DEVOTIONAL BOOKS /MESSENGER** - available to be picked up at church.

✠**CHURCH HANDBOOKS / DIRECTORY**- We are working on updating the church directory and Handbook. If your picture is not in the directory already and you would like to submit one, please submit your pictures to Liz Walker, clcvolunteers9@gmail.com or to the office. Please confirm if your information is up to date or send corrections please. We would like this to be updated and published soon.

✠**Contribution Statements**- Available for pick up in the Narthex anytime.

CONTINUED PRAYERS

HOSPITALIZED, RECOVERY OR ON-GOING TREATMENT

Rod Hester, 2015 Roberts Road, Taylorsville, 40071
Anne Hernandez, 10116 Cedar Crest Court, 40291
Beverly Kelly, 7603 Endecott Place, Prospect, 40059
Shari Bessette, 1647 Greenland Park Circle, Shelbyville, 40065
Ryan Bessette, 1647 Greenland Park Circle, Shelbyville, 40065
Doug Kull, 6520 Keeling Pl. Rd., 40291
Janet Kull, 6520 Keeling Pl. Rd., 40291
Kathy Bremner, 8117 Watterson Trail, Louisville, 40299
Mary Glasscock, 319 Allen Rd, Clarkson, Ky. 42726

NURSING HOMES AND HOMEBOUND

Earl Breitenstein, 4014 Mulberry Row Way, 40299
Carol Breitenstein, 4014 Mulberry Row Way, 40299
Mary C. Metzner, 320 Joe Conway Circle, Masonic Home Room #138 Louisville Ky 40041
Danna Hesse, Forest Hills Commons, 9107 Taylorsville Rd. Apt 133, 40299
Florence Bright, 2619 Lindsay Ave., 40206
Wilma Brown, 10625 Wimberley Hills Blvd., 40241
Doris Bentley, Morning Pointe, 4711 S. Hurstbourne Pkwy, 40299
Martha Classon, Anthology of Louisville, 1105 Dorsey Ln., Rm 301, 40223
Audrey Albin, 903 Blankenbaker Parkway, Apt 123, 40243
Becky Zibart, Forest Springs Health Campus, 4120 Wooded Acre Ln. Rm. 301, 40245
Chester Evans, Symphony at Valley Farms, 10201 Valley Farms Blvd, 40272
Mary Lou Vaughn, Nazareth Home, 2000 Newburg Rd. #262 E. Vaughn, 40205
Pete Peters, Forest Springs Health Campus, 4120 Wooded Acre Ln. Rm 519, 40245
Mary Lou Miller, 13600 Lagrange Road, Apt. 238, 40245
Norma Kuerzi, 34515 Hurstborne Ln Apt 214, 40299
Betty Payne, 2300 Old Hickory Road, 40299
Betty Graff, 1143 Fisherville Rd, 40022

***Please notify the church or the Pastor of any changes.**



Church Office Hours:

Monday through Friday

9:00AM - 4:30 PM

If you wish to contact Pastor Limbong
please call the church at (502-267-5082)
or his cell phone: (502-553-6025)

His scheduled days off are Friday and Saturday

Except during an emergency

Office Email Address:

Church_office@christlutheranlouisville.com

Visit our church website:

www.christlutheranlouisville.com

Or scan the QR.code



Copyright © 2022 Augsburg Fortress. All rights reserved. Reprinted by permission under Augsburg Fortress Liturgies Annual License #SAS006897. New Revised Standard Version Bible, copyright © 1989, Division of Christian Education of the National Council of the Churches of Christ in the United States of America.

Used by permission. All rights reserved.