



**Blue Christmas**  
**Christ Lutheran Church**  
**December 21, 2022**  
**6:00 pm**

# Blue Christmas



**Prelude**

**Welcome**

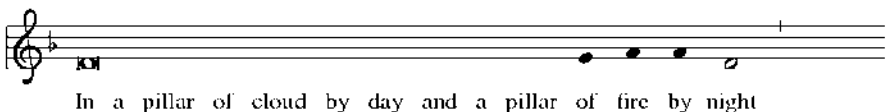
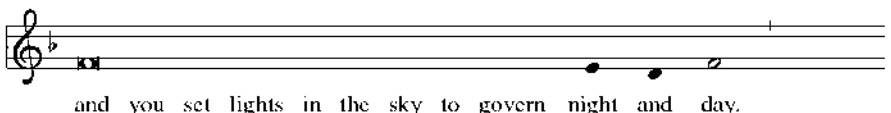
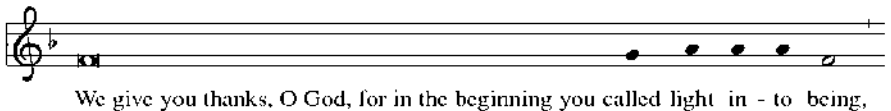
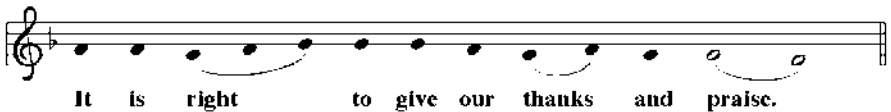
**Greeting**

**P.** The light of our Lord Jesus Christ, the warmth of God, and the hope of the Holy Spirit be with you all.

**C.** **And also with you.**

**Gathering Song** *Come, Thou Long-Expected Jesus* **ELW 254**

**Thanksgiving for Light**



you led your peo - ple in - to freedom.

Enlighten our darkness by the light of your Christ; may your Word be

a lamp to our feet and a light to our path: for you are mer-ci - ful,

and you love your whole cre-a-tion, and with all your crea-tures we give you glory,

through your Son Je - sus Christ, in the unity of the Ho - ly Spirit,

now and for - ev - er. A - men.

## Psalm 27

<sup>1</sup>The LORD is my light and my salvation; whom then<sup>1</sup> shall I fear?

The LORD is the stronghold of my life; of whom shall I<sup>1</sup> be afraid?

<sup>2</sup>When evildoers close in against me to de-<sup>1</sup>vour my flesh, they, my foes and my enemies, will stum-<sup>1</sup>ble and fall.

<sup>3</sup>Though an army encamp against me, my heart<sup>1</sup> will not fear. Though war rise up against me, my trust will<sup>1</sup> not be shaken.

<sup>4</sup>One thing I ask of the LORD; one<sup>1</sup> thing I seek;

that I may dwell in the house of the LORD all the days of my life; to gaze upon the beauty of the LORD and to seek God<sup>1</sup> in the temple.

<sup>5</sup>For in the day of trouble God will<sup>1</sup> give me shelter,



hide me in the hidden places of the sanctuary, and raise me high up-<sup>1</sup> on a rock.

<sup>6</sup>Even now my head is lifted up above my enemies<sup>1</sup> who surround me.

Therefore I will offer sacrifice in the sanctuary, sacrifices of rejoicing; I will sing and make music<sup>1</sup> to the LORD.

<sup>7</sup>Hear my voice, O LORD,<sup>1</sup> when I call; have mercy on me and<sup>1</sup> answer me.

<sup>8</sup>My heart speaks your message—<sup>1</sup> “Seek my face.”

Your face, O LORD,<sup>1</sup> I will seek.

<sup>9</sup>Hide not your face from me, turn not away from your servant in anger.

Cast me not away—you have been my helper; forsake me not, O God of<sup>1</sup> my salvation.

<sup>10</sup>Though my father and my mother<sup>1</sup> forsake me, the LORD will<sup>1</sup> take me in.

<sup>11</sup>Teach me your<sup>1</sup> way, O LORD; lead me on a level path, because of<sup>1</sup> my oppressors.

<sup>12</sup>Subject me not to the will<sup>1</sup> of my foes, for they rise up against me, false witnesses<sup>1</sup> breathing violence.

<sup>13</sup>This I believe—that I will see the goodness<sup>1</sup> of the LORD in the land<sup>1</sup> of the living!

<sup>14</sup>Wait for the LORD<sup>1</sup> and be strong. Take heart and wait<sup>1</sup> for the LORD!

## Prayer

P. Creator of the stars of night, bless the long hours of this night with the warmth of your presence. Come to all who suffer in any way. Grant rest to the weary, freedom to those who are burdened, and bright hope to those who despair. Strengthen us as we await your coming once again, through Jesus Christ, our Savior and Lord.

C. Amen.



## First Reading

Isaiah 40:1-11



<sup>1</sup>Comfort, O comfort my people, says your God.

<sup>2</sup>Speak tenderly to Jerusalem, and cry to her that she has served her term, that her penalty is paid, that she has received from the LORD's hand double for all her sins. <sup>3</sup>A voice cries out:

"In the wilderness prepare the way of the LORD, make straight in the desert a highway for our God. <sup>4</sup>Every valley shall be lifted up, and every mountain and hill be made low; the uneven ground shall become level, and the rough places a plain.

<sup>5</sup>Then the glory of the LORD shall be revealed, and all people shall see it together, for the mouth of the LORD has spoken."

<sup>6</sup>A voice says, "Cry out!" And I said, "What shall I cry?" All people are grass, their constancy is like the flower of the field.

<sup>7</sup>The grass withers, the flower fades, when the breath of the LORD blows upon it; surely the people are grass. <sup>8</sup>The grass withers, the flower fades; but the word of our God will stand forever.

<sup>9</sup>Get you up to a high mountain, O Zion, herald of good tidings; lift up your voice with strength, O Jerusalem, herald of good tidings, lift it up, do not fear;

say to the cities of Judah,

"Here is your God!"

<sup>10</sup>See, the Lord GOD comes with might,

and his arm rules for him;

his reward is with him,

and his recompense before him.

<sup>11</sup>He will feed his flock like a shepherd;

he will gather the lambs in his arms,

and carry them in his bosom,

and gently lead the mother sheep.

**Song** *Comfort, comfort now my people*

ELW 256

## Second Reading

*Revelation 22:1-5*

<sup>1</sup>Then the angel showed me the river of the water of life, bright as crystal, flowing from the throne of God and of the Lamb <sup>2</sup>through the middle of the street of the city. On either side of the river is the tree of life with its twelve kinds of fruit, producing its fruit each month; and the leaves of the tree are for the healing of the nations. <sup>3</sup>Nothing accursed will be found there any more. But the throne of God and of the Lamb will be in it, and his servants will worship him; <sup>4</sup>they will see his face, and his name will be on their foreheads. <sup>5</sup>And there will be no more night; they need no light of lamp or sun, for the Lord God will be their light, and they will reign forever and ever.

## Song

*Of the Father's love begotten*

ELW 295

## Gospel

John 1:1-5

<sup>1</sup>In the beginning was the Word, and the Word was with God, and the Word was God. <sup>2</sup>He was in the beginning with God. <sup>3</sup>All things came into being through him, and without him not one thing came into being. What has come into being <sup>4</sup>in him was life, and the life was the light of all people. <sup>5</sup>The light shines in the darkness, and the darkness did not overcome it.

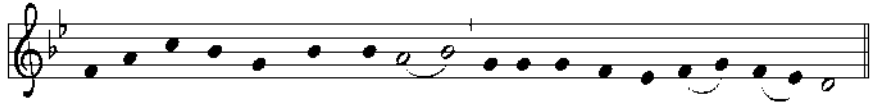
## Reflection



# Gospel Canticle



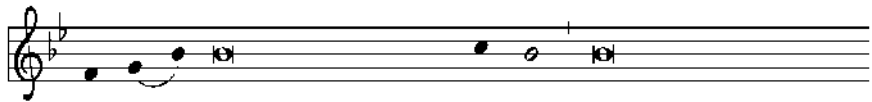
Guide us wak - ing, O Lord, and guard us sleep - ing;



that a-wake we may watch with Christ and a-sleep we may rest in peace.



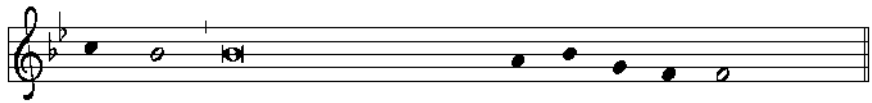
Now, Lord, you let your servant go in peace: your word has been ful-filled.



My own eyes have seen the sal - va - tion which you have prepared



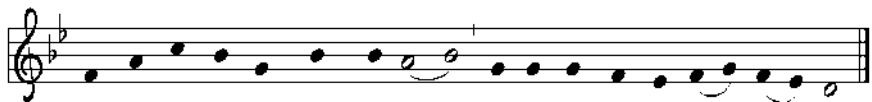
in the sight of ev - 'ry peo - ple: a light to reveal you to the



na - tions and the glory of your peo - ple Is - ra - el.



Guide us wak - ing, O Lord, and guard us sleep - ing;



that a-wake we may watch with Christ and a-sleep we may rest in peace.

## Prayer

### Peace

P. The peace of Christ be with you all.

C. **And also with you.**

P. Please share peace with one another in the name of the Lord.

### Offering

#### Offertory Prayer

P. Let us pray,

C. **Everything in heaven and earth belongs to you. We joyfully release what you have entrusted to us. May these gifts be signs of our whole lives returned to you, dedicated to the healing and unity of all creation, through Jesus Christ. Amen.**

### Blessing

P. May God bless you and keep you.  
May God's holy darkness enfold you and grant you rest.  
May God nourish a seed of hope among us.

C. **Amen.**

### Song

*Wait for the Lord*

ELW 262

### Dismissal

A. Making Christ Known. God in peace and serve the Lord.

C. **Thanks be to God.**





## What is Blue Christmas?

We might wonder what Blue Christmas is. Blue Christmas is a Western Christian tradition that happens on the longest darkness of the year, December 21st, also called the Winter Solstice. This is a contemplative service, offered especially for those hurting during this holiday season; those who lost their loved ones, including those who are suffering from illness, addiction, violence, loneliness, financial hardship, conflict, etc.

We gather in the midst of suffering to remember that God indeed arrives by way of deep darkness. We want to tell the world that God, the maker of the cosmos, chose to lovingly draw near to our broken world by way of a human birth on the longest night of the year. God indeed is near. We are not alone and we have every reason to hold on to hope.

This is the first time we are having Blue Christmas in our church. We will be taking our time to remember those who are going through difficult situations, those who have lost their loved ones or those who are suffering in body, mind and spirit. We do this so that the Light of Christ might shine and bring hope and healing.



**During Blue Christmas, please remember the following people and their families in your prayers:**

Dave Pfalzgraf, 6408 Marina Drive, Prospect, 40059  
Danna Hesse, 204 Marksfield Circle, Apt. 2, 40222  
Florence Bright, 2619 Lindsay Ave, Louisville, KY 40206  
Rod Hester, 2015 Roberts Road, Taylorsville, KY 40071  
Anne Hernandez, 10116 Cedar Crest Court, 40291  
Ron Coombs, 1109 Glenlake Way, 40245  
Mary C. Metzner, Nazareth Home, 2120 Payne St, 40206  
Beverly Kelly, 7603 Endecott Place, Prospect, 40059  
Shari Bessette, 1647 Greenland Park Circle, Shelbyville, 40065  
Ryan Bessette, 1647 Greenland Park Circle, Shelbyville, 40065  
Charlie Werder, 9699 Kings Grant Dr., Murrell's Inlet, SC, 29576  
Doug Kull, 6520 Keeling Pl. Rd., 40291  
Jayla Perry, 3205 College Dr, 40299  
Becky Miller, 8003 Brookglen Ct., 40220  
Jane Farrar, 9801 Hillary Ct, Louisville, 40291  
Barbara Morgan, 4303 Dannywood Rd., Louisville, 40220  
Betty Payne, Jefferson Place, 1705 Herr Ln., 40222  
Earl Breitenstein, 4014 Mulberry Row Way, 40299  
Wilma Brown, 10625 Wimberley Hills Blvd., 40241  
Grazia Johnson, 1377 Waxwing Pl, 40223  
Doris Bentley, Morning Pointe, 4711 S. Hurstbourne Pkwy, 40299  
Martha Classon, Anthology of Louisville, 1105 Dorsey Ln., Rm 301, 40223  
Audrey Albin, 903 Blankenbaker Parkway, Apt 123, 40243  
Dean Nordman, Regency Center, 1550 Raydale Dr., 40219  
Mary Lou Miller, 13600 Lagrange Road, Apt. 238, 40245  
Chester Evans, Symphony at Valley Farms, 10201 Valley Farms Blvd, 40272  
Becky Zibart, Forest Springs Health Campus,  
4120 Wooded Acre Ln. Rm. 107, 40245  
Mary Lou Vaughn, Nazareth Home,  
2000 Newburg Rd. #262 E. Vaughn, 40205  
Mary Lou Peters, Forest Springs Health Campus,  
4120 Wooded Acres Ln, Rm 403, 40245  
Pete Peters, Forest Springs Health Campus,  
4120 Wooded Acres Ln., Rm 403, 40245



**CHRIST EVANGELICAL LUTHERAN CHURCH**  
**THE CHURCH IN LIFE & WORK**



**December 21, 2022**

**Dec 24 5:00 pm- Christmas Eve Service**

**8:15 pm- Choir Rehearsal**

**9:00 pm -Christmas Eve Service**

**Dec 25 11:00 am- Lessons and Carols with Communion**  
**(In person and online)**

**HEALTH PROTOCOL:** Wearing masks is highly recommended during worship and other meetings to be mindful of others, especially the vulnerable among us.

**LIVE STREAM** – The 11:00 am service is live streamed on Sundays at 11:00 am. You can join us on our Facebook page or YouTube. We need volunteers to help us with the streaming for Christmas Eve at 5:00pm and on Christmas Day at 11:00am service.

**CHRISTMAS EVE CANDLE LIGHT SERVICES** at 5:00pm and 9:00pm. The 5:00pm service is a family friendly service.

**PROPERTY** - The property committee asks if you have a concern, please fill out a blue form located by the office and leave it in the holder for action in lieu of asking a committee member on Sunday morning.

**A REMINDER FROM THE STEWARDSHIP AND FINANCE COMMITTEES** - December 25th (Christmas Day) is the last Sunday of the 2022 fiscal year. The final deposit of the year will be made on Friday December 30 at 2 pm. We thank everyone for their gifts this year .



## Office Hours:

Monday 8:30—4:30

Tuesday 8:30—4:30

Wednesday 8:30—4:30

Thursday 8:30—4:30

Friday 8:30—4:30



If you wish to contact Pastor Bimen  
please call the church at 502-267-5082 or  
his cell phone 502-553-6025.

His scheduled days off are Friday and Saturday

*Except during an emergency.*

Office Email Address:

*church\_office@christlutheranlouisville.com*



Rev. Dr. Bimen Limbong, Pastor  
Pr. George Mercer, Pastoral Assistant  
Ann Colbert Wade, Director of Music

The Liturgy is Adopted from ELW Supplement All Creation Sings ACS, Augsburg  
Fortress